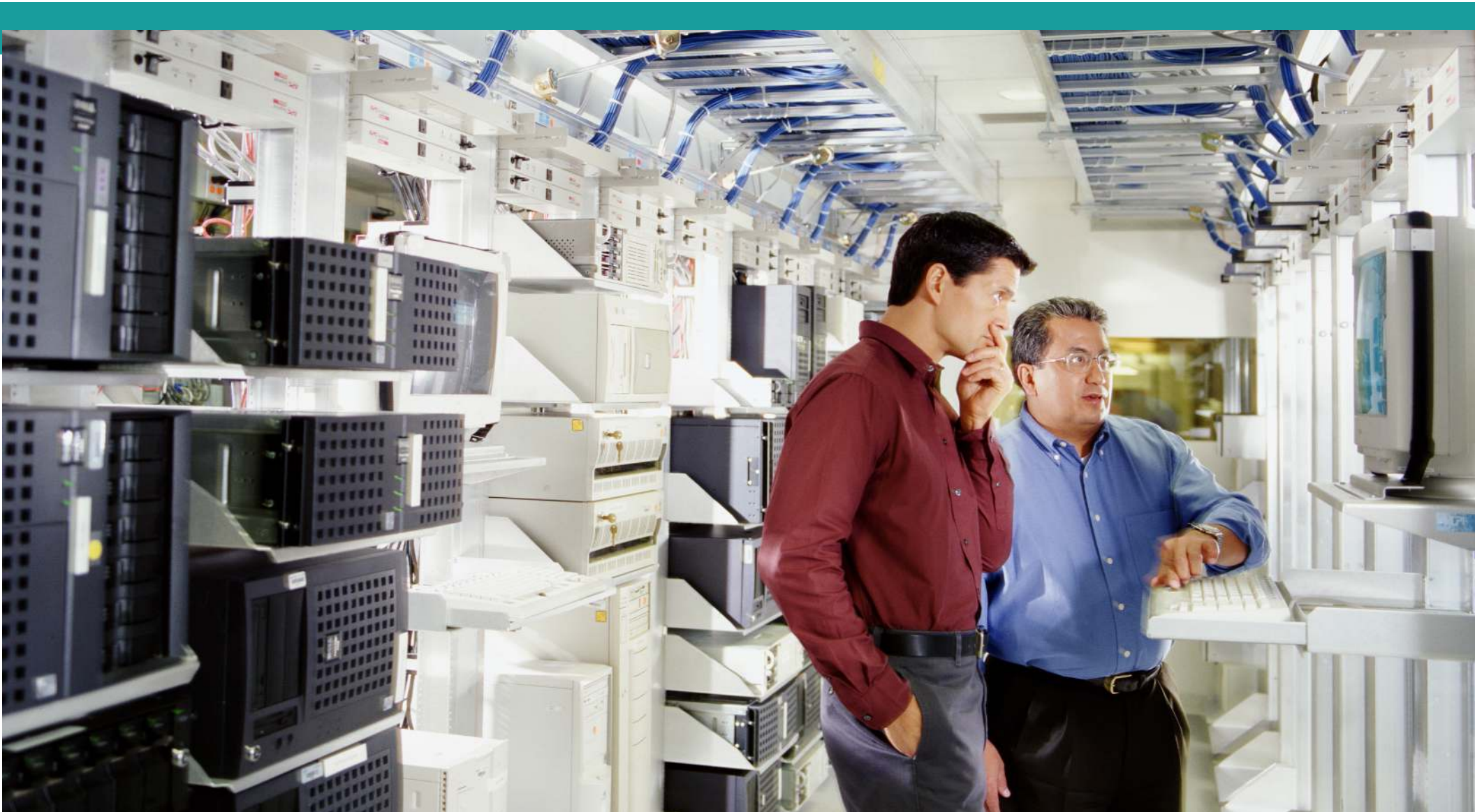


DOES DATA SECURITY FEEL OVERWHELMING?

Netchex has you covered with protection you can count on.



Netchex Security

With the continuing escalation of corporate data breaches year after year, securing your organization's data is more important than ever. At Netchex, we are here to help. We understand the confidentiality, integrity, and availability of data is paramount to the success and continued growth of your business. That is why our Information Security Team's commitment to data security is baked into every aspect of the services we provide.



Netchex Data Center Security

Our application is hosted in an AICPA SOC 2 Type 2 compliant datacenter, leveraging coast to coast geographic redundancy of all critical functions and customer data to ensure that data is accessible around the clock. Facility setback, barriers, and fencing protect data center perimeters. All buildings within the data center are secured with alarms, security cameras, and seismic bracing to protect against unauthorized intrusion as well as unforeseen natural disasters. Server rooms are further protected with two-factor biometric and card access control and enough backup power to run the facility for days. Operations and security staff are on site around the clock to monitor systems for indicators of failure or issues that could impact both the security and availability of our application.

Netchex Team Member Security

All Netchex employees go through detailed background checks prior to being granted access to customer data. Training and security policies have also been implemented to ensure all employees know how to properly identify and handle customer data, as well as how to utilize our systems in a secure manner. Employee access is only granted to areas of our application that are required to service our customers' needs in accordance with our employee-specific job roles.

Netchex Network Security

Our Netchex application is protected by a level-1 PCI certified web application firewall that blocks attacks before they reach our servers. This technology stops Denial of Service, SQL injection, cross-site scripting, and a myriad of other threats in their tracks. Processes that cannot be achieved through the front-end of the Netchex application are securely performed over direct point-to-point connections and site-to-site VPNs between the hosting data centers and our corporate offices. The Netchex application is further secured utilizing redundant network equipment and firewalls to ensure each part of our application is available and only accessible to authorized and required services.

Netchex Application Security

Code is tested by a dedicated quality assurance team and reviewed by senior team members prior to being released into our production environment. Our security team also utilizes static code analysis and dynamic testing to hunt vulnerabilities in coding and prioritize remediation. Every aspect of our application is monitored both internally and externally to ensure the highest level of availability. Netchex staffs on call engineers 24x7x365 to respond to alerts received from our monitoring solutions to keep your business and data up and running.



Netchex Data Security

All customer data transmitted to and from our hosted web application is encrypted utilizing TLS 1.2 communications. AES-256 encryption is enforced for data at rest and storage is limited to United States based datacenters. Our security team monitors and responds to alerts of suspected fraud and will proactively notify clients of any suspicious activity. All users are required to adhere to strict password standards. In addition, IP address restrictions are required for all Netchex personnel and available to customers who request this additional safeguard. Data is highly-available and protected from disaster through geographically redundant replication as well as encrypted local and off-site backups.

Netchex HQ Security

Our corporate office is protected by badge access control, alarm systems, and security cameras. All network equipment and corporate servers are further secured with additional access control and accessible only by key Information Technology personnel. Sensitive corporate data is stored encrypted when at rest and only transmitted securely through our application or encrypted email. All paper records and digital media are destroyed on-site by a Mobile Shredding Association certified vendor prior to being disposed of. In the event of a disaster, all critical back office functions and client support can be migrated to a satellite office.



Netchex Customer Security

Netchex empowers our customers to review and identify any suspected suspicious activity on their account from within our hosted application. Customers can review audit reports to verify logins and that access permissions to their data are properly authorized. Master audit reports are also available to review changes to employee data. Netchex service and security teams are available to our customers to investigate and answer any questions our customers may have about suspected suspicious activity on their accounts.

Netchex Security Audits

Netchex takes pride in its security, but our clients do not have to just take our word for it. All Netchex processes are audited and are maintained to strict AICPA SOC 1 and 2 Type 2 compliance standards. Our latest SOC 1 and SOC 2 reports can be provided to current and prospective customers upon request with an executed, current non-disclosure agreement.

HOW CAN WE HELP?

Netchex offers employers more than a payroll software. We are a team of payroll, tax, and HR specialists with a passionate commitment to customer service.

Netchex's simply powerful solution gives you a suite of customizable systems backed by an amazing, dedicated team. Payroll, HR and benefits expertise coupled with an intelligent design that puts friendly service first.

LET'S TALK.

Call (877) 729 2661 or visit us at netchexonline.com

